

Download the free app:



Download the Project Mc²™ app available on iOS devices through the app store. Data rates may apply.



Follow us:



Watch on:



Kids, ask your parents to download the Project Mc²™ app :

- Click on the App Store icon on your iOS device.
- Click "Search" on your mobile device and type in "Project Mc²™"
- Once the correct app name comes up on the screen, tap on the word "free."
- You may be asked for your Apple ID. If so, enter your ID or follow the instructions on screen to get one.
- Once your ID is accepted, watch the download status until the download is complete.
- The application icon should appear on your device. Tap the icon to activate the app.

The Project Mc²™ app requires iOS 6.1 or later. Compatible with iPod Touch 4, iPhone 4 and iPad 2 or later versions.

iPhone, iPod Touch and iPad are trademarks of Apple Inc., registered in the U.S. and other countries.



'Let's care for the environment!

The wheelee bin symbol indicates that the product must not be disposed of with other household waste. Please use designated collection points or recycling facilities when disposing of the item.

Do not treat old batteries as household waste. Take them to a designated recycling facility.

Please keep this manual as it contains important information.



0415-1-E/INT

www.projectmc2.com
© 2015 MGA Entertainment, Inc.
PROJECT MC²™ is a trademark of MGA in the U.S. and other countries. All logos, names, characters, likenesses, images, slogans, and packaging appearance are the property of MGA.

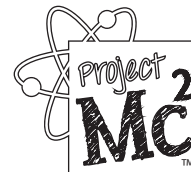
16300 Roscoe Blvd.
Van Nuys, CA 91406 U.S.A.
(800) 222-4685

Printed in China

MGA Entertainment UK Ltd.
50 Presley Way
Crownhill
Milton Keynes, MK8 0ES
Bucks, UK
+ 0800 521 558

Visit www.mgae.com to register your product and to enter our sweepstakes (No purchase necessary)

The preferred method of contact for Customer Service is through our e-mail contact form at www.mgae.com



535836

SODA CAN ROBOT

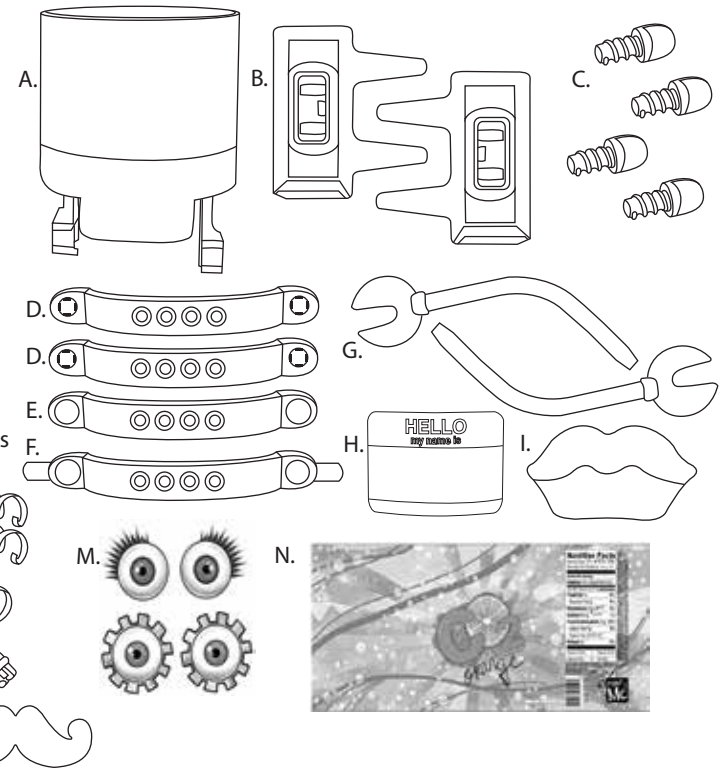
6+ YEARS

WARNING:
CHOKING HAZARD—Small parts.
Not for children under 3 years.

ADULT SUPERVISION RECOMMENDED

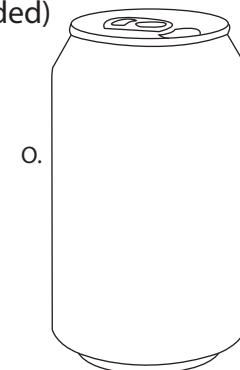
CONTENTS

- A. 1 Robot Base
- B. 2 Robot Feet
- C. 4 Screws
- D. 2 Rear Ring Clamps
- E. 1 Front Ring Clamp
- F. 1 Front Ring Clamp with Extensions
- G. 2 Arms
- H. 1 Name Tag
- I. 1 Pair of Lips
- J. 2 Lanyard Hair Clips
- K. 1 Pair of Glasses
- L. 1 Mustache
- M. 2 Pairs of Eyes Stickers
- N. 1 Soda Can Label



YOUR KITCHEN ITEMS (Not Included)

- O. 1 Empty Soda Can

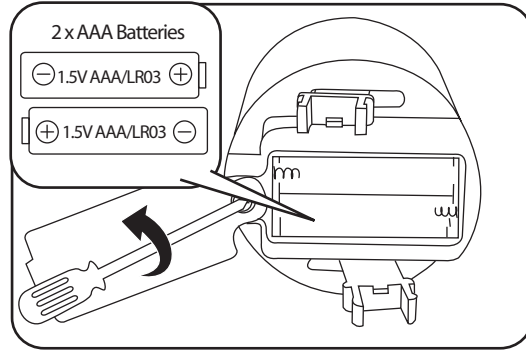


Illustrations are for reference only. Styles may vary from actual contents.

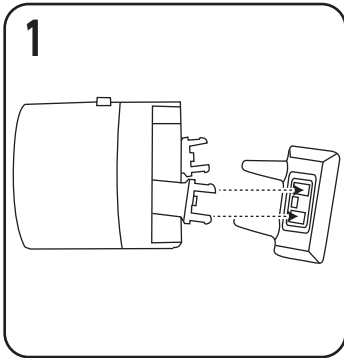
BEFORE YOU BEGIN

An adult must install fresh alkaline batteries (not included) in the robot base prior to playing. Here's how:

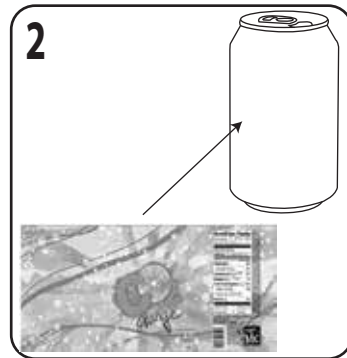
1. Remove the feet from the robot base.
2. Using a Phillips screwdriver (not included) remove the screw battery compartment cover on the bottom of the base.
3. Install two (2) 1.5V AAA (LR03) alkaline batteries (not included) making sure the (+) and (-) ends face the proper direction as indicated inside the battery compartment.
4. Replace the compartment cover and tighten the screw.



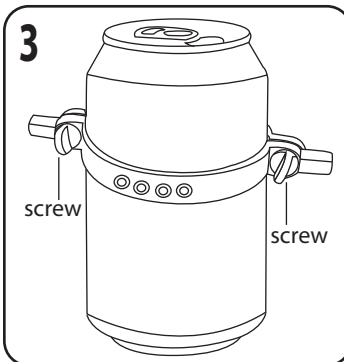
QUICK START



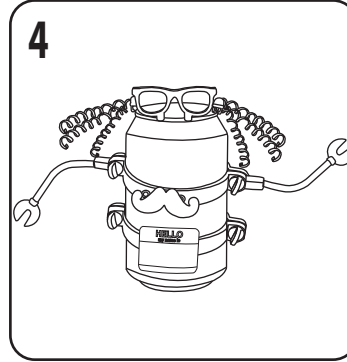
1. Snap the two feet onto the robot base with the points facing inward as shown.



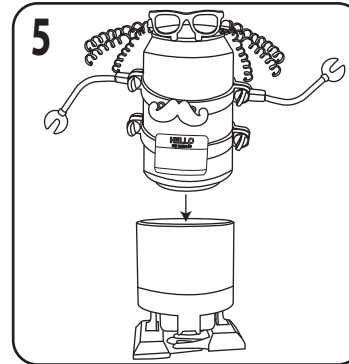
2. Peel the sticker label from its backing and wrap it around the soda can.



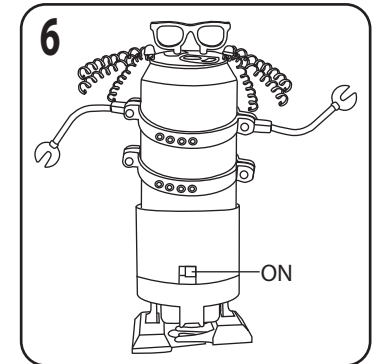
3. Place one front ring clamp and one rear ring clamp around the can and secure with screws. Repeat with additional ring clamps.



4. Build your robot by attaching parts to the can rim, adding accessories to the openings on the clamps and attaching eye stickers.



5. Place the robot into the robot base.



6. Move the switch on the back of the unit to the "ON" position to make your robot walk!

IMPORTANT INFORMATION

- Always turn the robot base "OFF" after playing to conserve battery life.
- DO NOT expose the robot base to moisture of any kind.
- Do not use stickers on humans, pets, furniture or any item which may be damaged by sticker or sticker removal.
- Stickers may not be removable once applied to the can or can label.

SAFE BATTERY USAGE

- Use alkaline batteries for best performance and longer life.
- Use only the type battery recommended for the unit.
- Batteries should be replaced only by an adult.
- Insert batteries with the correct polarity (+ and -).
- Do not mix old and new batteries.
- Do not mix alkaline, standard (carbon-zinc), or rechargeable (nickel-cadmium) batteries.
- Do not short-circuit batteries.
- When not used for an extended time, remove batteries to prevent possible leakage and damage to the unit.
- Do not mix rechargeable and non-rechargeable batteries.
- Rechargeable batteries are to be removed from the toy before charging.
- Rechargeable batteries are to be recharged only under adult supervision.
- Do not recharge non-rechargeable batteries.
- Exhausted batteries are to be removed from the toy.
- Do not dispose of batteries in fire as they may leak or explode.