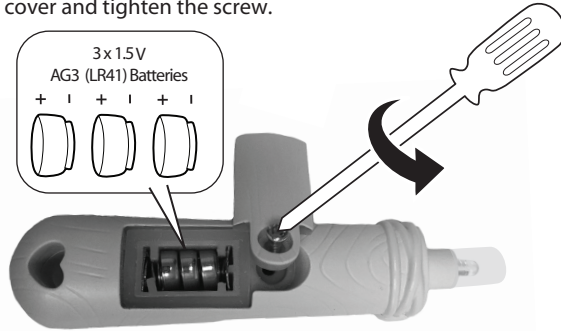


## BATTERY REPLACEMENT INFORMATION

An adult must install fresh alkaline batteries in the glow pop stick should the batteries need replacing. Here's how:

1. Using a Phillips screwdriver (not included) remove the screw battery compartment cover from the back of the glow pop stick.
2. Install three (3) 1.5V AG3 (LR41) alkaline batteries (not included) making sure the (+) and (-) ends face the proper direction as indicated inside the battery compartment.
3. Replace the compartment cover and tighten the screw.



## SAFE BATTERY USAGE

- Use alkaline batteries for best performance and longer life.
- Use only the type battery recommended for the unit.
- Batteries should be replaced only by an adult.
- Insert batteries with the correct polarity (+ and -).
- Do not mix old and new batteries.
- Do not mix alkaline, standard (carbon-zinc), or rechargeable (nickel-cadmium) batteries.
- Do not short-circuit batteries.
- When not used for an extended time, remove batteries to prevent possible leakage and damage to the unit.
- Do not mix rechargeable and non-rechargeable batteries.
- Rechargeable batteries are to be removed from the toy before charging.
- Rechargeable batteries are to be recharged only under adult supervision.
- Do not recharge non-rechargeable batteries.
- Exhausted batteries are to be removed from the toy.
- Do not dispose of batteries in fire as they may leak or explode.



'Let's care for the environment!'  
The wheelie bin symbol indicates that the product must not be disposed of with other household waste. Please use designated collection points or recycling facilities when disposing of the item. Do not treat old batteries as household waste. Take them to a designated recycling facility.

Please keep this manual as it contains important information.



0816-0-E/INT

www.numnoms.com  
© 2016 MGA Entertainment, Inc.  
NUM NOMS™ is a trademark of MGA in the U.S. and other countries. All logos, names, characters, likenesses, images, slogans, and packaging appearance are the property of MGA.

16300 Roscoe Blvd.  
Van Nuys, CA 91406 U.S.A.  
(800) 222-4685

Printed in China

MGA Entertainment UK Ltd.  
50 Presley Way  
Crownhill  
Milton Keynes, MK8 0ES  
Bucks, UK  
+ 0800 521 558

Visit [www.mga.com](http://www.mga.com)  
to register your product  
and to enter our sweepstakes  
(No purchase necessary)

The preferred method of contact for Customer Service is through our e-mail contact form at [www.mgae.com](http://www.mgae.com)

# NUM NOMS™

Smell so delicious!™

## Lights Freezie Pop Maker

**WARNING:**  
CHOKING HAZARD—Small parts.  
Not for children under 3 years.

AGE 3+ YEARS

ADULT ASSEMBLY AND SUPERVISION REQUIRED

545576

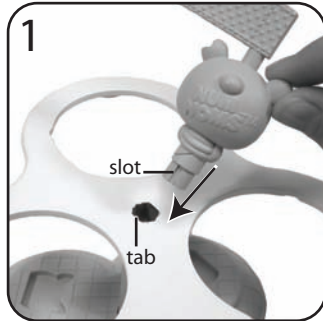
## CONTENTS

- |                      |                       |                         |
|----------------------|-----------------------|-------------------------|
| A. 1 Pop Maker Stand | F. 1 Spoon            | K. 3 Noms               |
| B. 1 Pop Holder      | G. 1 Pineapple Mix    | L. 1 Light-Up Pop Stick |
| C. 1 Post            | H. 1 Cotton Candy Mix | M. 2 Pop sticks         |
| D. 1 Post Topper     | I. 1 Blueberry Mix    | N. 1 Recipe Booklet     |
| E. 1 Mixing Bowl     | J. 3 Nums             |                         |

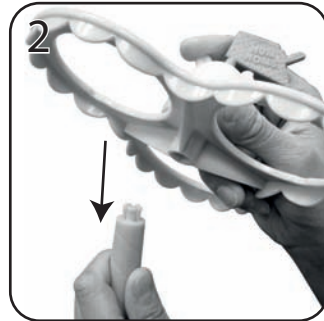


Illustrations are for reference only. Styles may vary from actual contents.

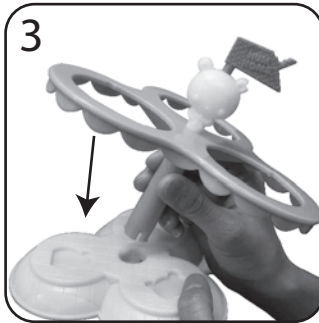
## ASSEMBLY



1  
Insert the post topper into the center of the pop holder by aligning the slot on the topper with the tab on the pop holder.



2  
Snap the pop holder onto the post.



3  
Align the tabs on the post with the openings in the center of the pop maker stand and snap together.

## MIXING THE POP INGREDIENTS

Food mixes may cause staining. Cover your workspace before playing and avoid spilling food on clothing. If dry mix is spilled, use a broom or vacuum to clean it up. If wet mix is spilled, wash immediately with soap and water.



4  
Select an included recipe and gather all of the required ingredients.



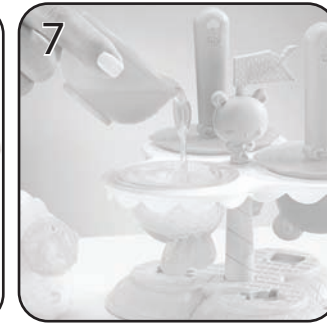
5  
Use the mixing bowl and spoon to create the mixture for your freezie pop. Make sure the mix is fully dissolved.

## CREATING THE FREEZIE POP

Food mixes may cause staining. Cover your workspace before playing and avoid spilling food on clothing. If dry mix is spilled, use a broom or vacuum to clean it up. If wet mix is spilled, wash immediately with soap and water.



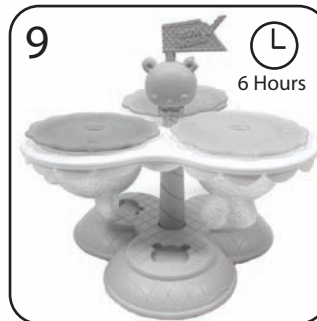
6  
Place the Num in the pop holder so that the opening faces upward.



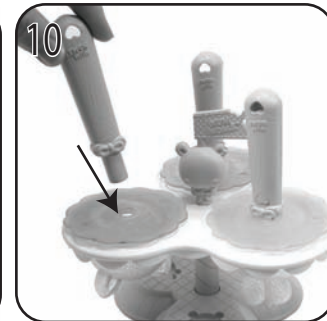
7  
Pour the mixture almost to the top of the Num, but do not fill completely to allow room for the Nom.



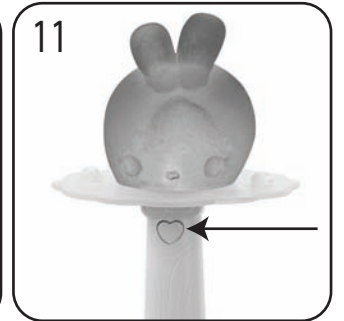
8  
Place the Nom facing downward in the mixture. Align the beads on the Nom with the indents in the Num. Gently press together to close and seal.



9  
Place the pop holder assembly on a level surface in the freezer until the mixture is frozen solid (about 6 hours).



10  
Insert one pop stick into each of the Noms and remove the pop from the holder. Then, peel off the Num and enjoy your treat!



11  
Insert the light-up pop stick into one Nom to light up the freezie pop! Press and hold the heart button on the back of the stick to make it glow!

## IMPORTANT INFORMATION

- Thoroughly hand-wash all included accessories prior to the first use and after each additional use. Air dry thoroughly before storing.
- Do not submerge the glow pop stick in water. Hand-wash with a damp cloth and air dry. Avoid using water near the battery compartment.
- Wash hands before preparing food.
- Use under adult supervision. Ask an adult to help gather ingredients and other tools used to make freezie pops.
- Review the ingredients list on the included mix packs before use and prior to eating. Avoid mixes or other ingredients that may cause allergic reactions. If an allergic reaction occurs, discontinue use and seek medical advice.
- Stir the mixes until fully dissolved before pouring into the Num, or the mixture may not freeze properly.