

Store unused nails inside the donut table. Line up the arrows on the donut and table base to close.



Store stickers in the menu box under the window.

IMPORTANT INFORMATION

- Turning the bottle nozzles too far may cause them to detach from the bottles. Do not turn them too much to prevent using excess polish.
- For best results, wipe the opening of the nail polish bottles with a cotton swab to clear them before adding additional colors or nail polish base.
- If clogging occurs while filling the Nom with polish, clean the nozzle with tissue and clean the bottleneck with a cotton swab before proceeding.
- Do not eat nail polish base or nail polish flavors.
- Use nail polish remover (not included) to remove nail polish from nails if water can't remove it.
- Only apply nail polish to nails and plastic nails as it may not be removed from all surfaces.
- Do not use adhesives or stickers on anything other than the plastic nails, as they may not be removed from certain fabrics or surfaces.
- To remove plastic nails, gently peel off the nail and adhesive.
- Nail adhesives are not reusable. Discard after use.
- Keep nail polish and nail polish remover away from fire.
- Do not use nail polish near face or eyes.
- The bottle nozzles may need to be cleaned out after each use. Peel out excess product from the nozzles and rinse with warm water.
- Clean the nail polish bottles with warm water to reuse them. Color may not be completely removed.

Please keep this manual as it contains important information.



0517-1-E/INT

www.numnoms.com
© 2017 MGA Entertainment, Inc.
NUM NOMS™ is a trademark of MGA in the U.S. and other countries. All logos, names, characters, likenesses, images, slogans, and packaging appearance are the property of MGA.

16300 Roscoe Blvd.
Van Nuys, CA 91406 U.S.A.
(800) 222-4685
Printed in China

MGA Entertainment UK Ltd.
50 Presley Way
Crownhill
Milton Keynes, MK8 0ES
Bucks, UK
+ 0800 521 558



The preferred method of contact for Customer Service is through our e-mail contact form at www.mgae.com



Nail Polish Maker

WARNING:
CHOKING HAZARD—Small parts.
Not for children under 3 years.

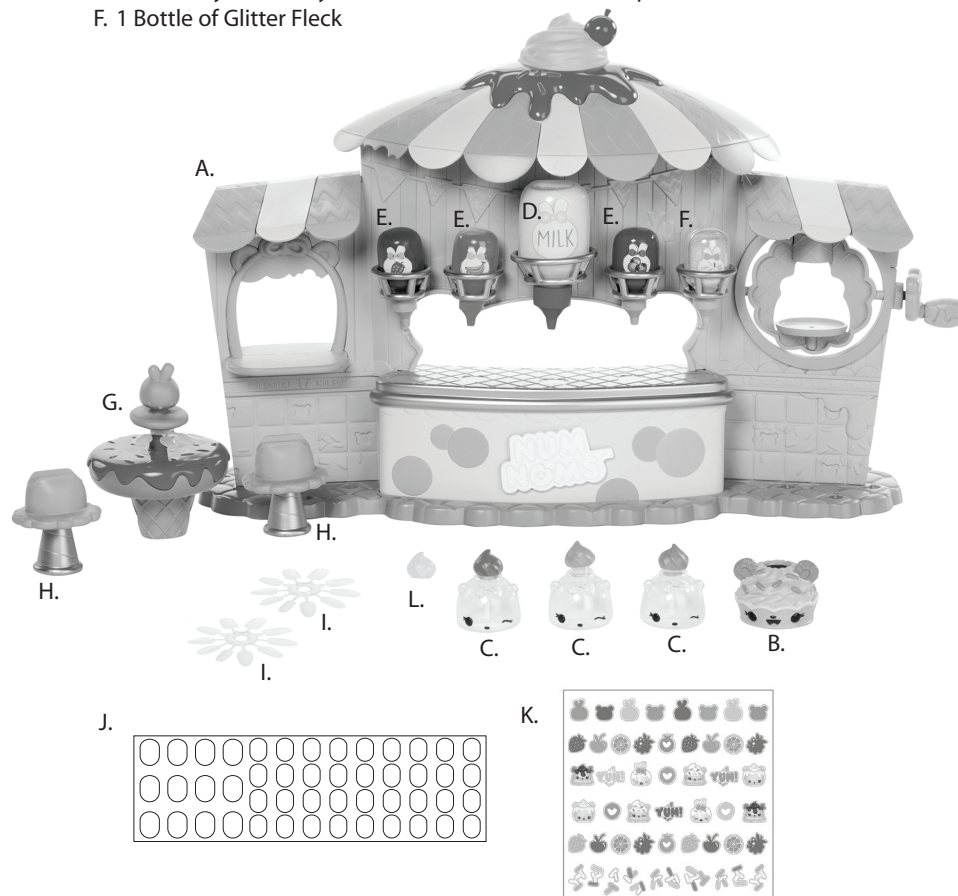
ADULT SUPERVISION REQUIRED

SKU: 547013

NOTE: To remove the playset from packaging, twist the locks under the playset to release it.

CONTENTS

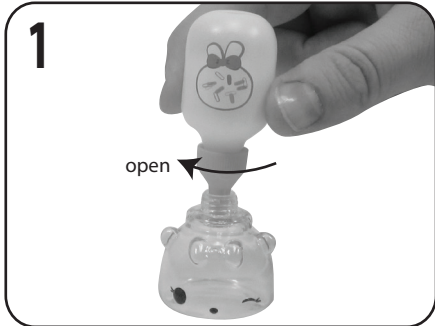
- | | |
|--|-------------------------------------|
| A. 1 Playset | G. 1 Donut Table |
| B. 1 Num | H. 2 Finger Stools |
| C. 3 Nom Nail Polish Holders with Brushes | I. 2 Nail Disks |
| D. 1 Nail Polish (Base) (Pearl) | J. 1 Nail Adhesive Sheet (48 pcs) |
| E. 3 Nail Polishes (Flavor) (Strawberry, Blueberry, Banana) | K. 1 Sticker Sheet |
| F. 1 Bottle of Glitter Fleck | L. 1 Cap without brush |



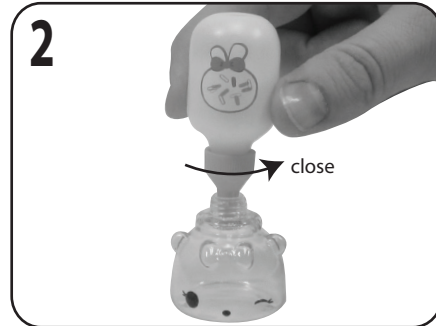
Illustrations are for reference only. Styles may vary from actual contents.

QUICK START

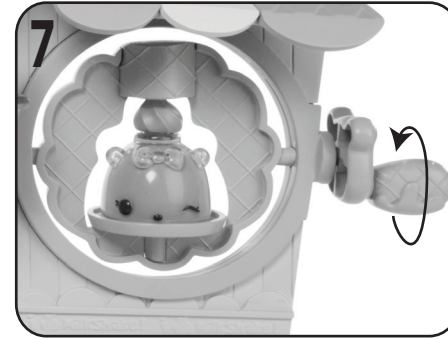
NOTE: Before beginning, cover the play area to prevent possible damage. Remove and discard the wrapping on all bottles. For best results, clean the bottleneck on the Nom with a cotton swab (not included) before adding more color or nail polish base.



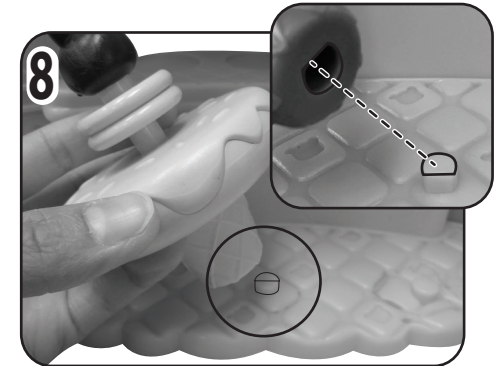
Remove the brush from the top of a Nom. Slightly twist the nozzle of the glitter bottle to the left to open it. Do not turn too far. Fully insert the nozzle into the Nom.



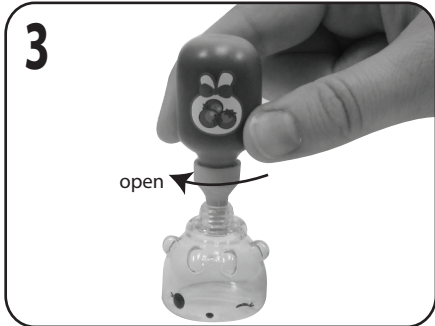
Repeatedly squeeze the sides of the bottle to add a few dashes of glitter. Twist the nozzle to the right to completely close it before removing the bottle.



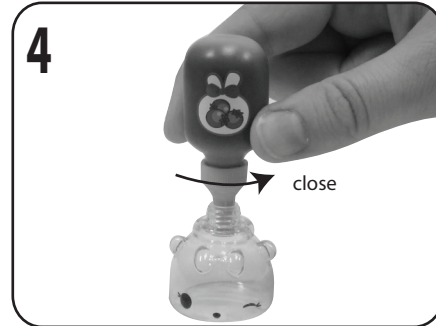
Place the Nom cap first on the spinner, pushing upward slightly to secure it in place. Slowly turn the Nom for one minute, or until the color is fully mixed.



Turn the playset around and attach the donut table and stools to the pegs on the playset. Align the flat edge of the peg with the flat edge on the opening of the table to assemble.



Select a nail polish "flavor" and slightly twist the nozzle to the left. Do not turn too far. Fully insert the nozzle into the Nom and squeeze in 3 or more drops of color.



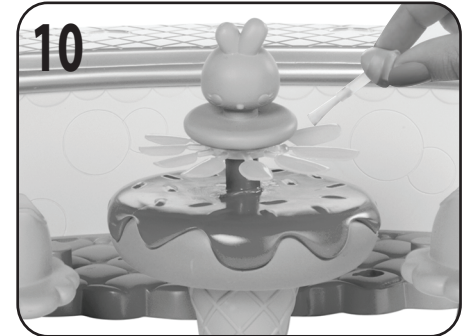
Twist the nozzle to the right to completely close it before removing the bottle. **NOTE:** Some of the nail polish flavors may squeeze out when closing the nozzle.

HINT: Mix different flavors to make new colors!
 2 Drops of Red Strawberry + 2 Drops of Blue Blueberry = Lavender
 2 Drops of Red Strawberry + 2 Drops of Yellow Banana = Peach
 2 Drops of Blue Blueberry + 2 Drops of Yellow Banana = Green

Make sure the opening on the Nom is not blocked by wiping it clean with a cotton swab (not included).



Turn the playset around and place your finger on a stool. Remove the brush from the Nom and paint your nails!



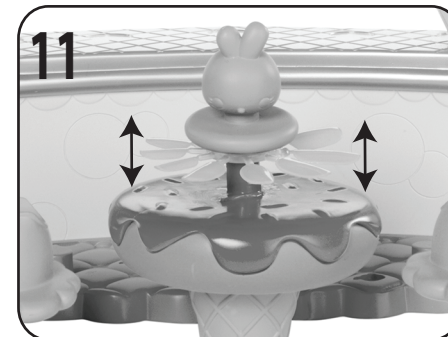
If you would prefer to paint the plastic nails, clamp the disk between the donut table and bunny topper. Paint each nail and spin the bunny to rotate the nail disk.



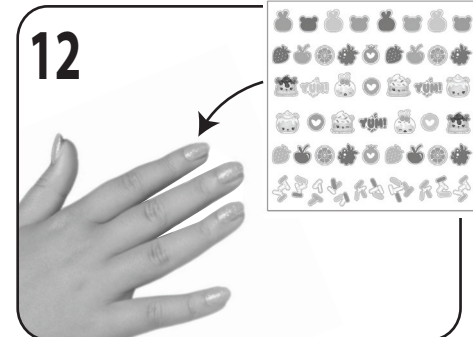
Slightly twist the nozzle on the nail polish base to the left and insert it into the Nom. Squeeze the sides of the bottle and fill the Nom up to the bow. Twist the nozzle to the right to close it before removing the bottle.



Tightly twist the brush cap onto the Nom and shake the bottle to mix the color. You can also use the brush to mix the polish.



Peel and place an adhesive on your nail. Once the plastic nails are dry, move them up and down (do not twist) to remove them from the nail disk. File down the edge to make it smooth. Then, place the right size nail over the adhesive. Continue for all nails.



Peel and place stickers on your dry plastic nails for extra fun!