



CONTENTS

- A. 1 Station
- B. 1 Removable Screen Frame
- C. 1 Top Cover Platform
- D. 1 Large Squeegee
- E. 1 Small Squeegee
- F. 10 Stencils
- G. 2 Gel Trays
- H. 5 Gel Tubes
- I. 3 Snap Sets
- J. 3 Round Tips
- K. 1 Star Tip
- L. 3 Rake Tips
- M. 1 Clear Drawing Sheet
- N. 1 Template
- O. 1 Cleaning Tool
- P. 1 Pair of Earring Hooks
- Q. 2 Jump Rings



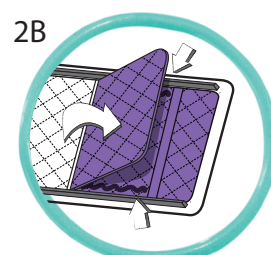
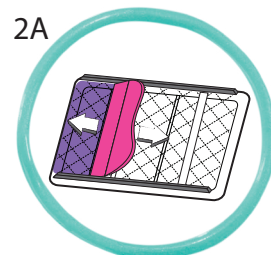
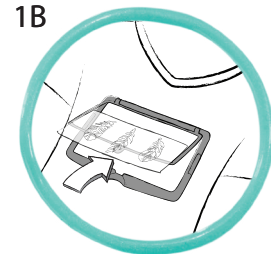
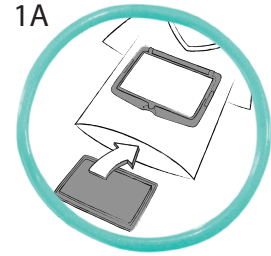
DRYING & WEARING

- Wait for the first color to dry before adding additional colors to your design.
- Dry times may vary. For best results, allow designs to dry overnight.
- Always remove the stencils from the screen frame immediately after designing before your creations dry.
- Don't stretch your finished projects or they might break.
- Hand wash fabrics with gel designs inside out and hang dry.



CLEANING, REPAIRING & STORING

- If you make a mistake, wipe the gel off of the clear drawing sheet with a paper towel before it hardens.
- To repair a broken piece, reapply gel over the broken section and wait for it to dry.
- To clean the tips, allow gel in the tip to harden. Then use the cleaning tool to scoop out the hardened gel.
- After designing, store all components inside of the station, underneath the top cover platform and screen frame. Store gel downward in the stand.



1. DESIGNING ON FABRIC:

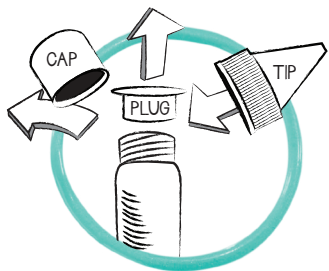
- Choose a thin material that you want to PERMANENTLY design (not included). NOTE: Thick fabrics like denim may not work with the clamp.
- Remove the screen frame and platform from the design station. Keep the frame and platform off of the station as you design.
- Open the screen frame and place the top cover platform in between your layers of fabric. (Fig. 1A)
- Clamp down one side of the frame and stretch the material tightly. Then, clamp down the other side.
- Lift the tab on the screen frame and slide in a stencil. Then, lay it flat over the material until you hear a snap. (Fig. 1B)
- If the stencil has multiple designs, but you choose to only use one, place scrap paper over the designs you do not wish to fill in.
- Add a tip to your desired gel tube and draw thick vertical lines down the stencil. Alternate colors for unique designs.
- Use the large squeegee to push the gel evenly over the stencil.
- Use the small squeegee if you are only designing over part of the stencil.
- Fill in any gaps with extra gel and squeegee again.
- Immediately remove the stencil by lifting the tab and sliding the stencil out.
- Allow your design to dry overnight.
- For layered designs, wait for the first color to dry before adding the layered stencil and adding more color.

2. GEL TRAYS:

- Clamp the frame over the platform. Insert the frame onto the station at an angle and snap down to lock in place.
- Place your gel tray over the top cover platform.
- Use two or more colors to complete your design.
- Draw thick vertical lines down the tray.
- Align the large squeegee with the raised edges of the gel tray and push the gel back and forth evenly over the tray. (Fig. 2A)
- Fill in any gaps with extra gel and squeegee again.
- Wait for the design to dry completely (usually overnight).
- Peel and fold over half of the design, but keep it in the tray.
- Add lines of gel on the inside edges of the clutch to secure it, avoiding the fold over flap. (Fig. 2B)
- Place a heavy book over the clutch while it dries.
- Once the design is dry, peel it off of the gel tray.
- Align the snaps so that they will close properly. Then, add a dollop of gel behind each snap and secure them to the clutch. Allow the snaps to dry before using.

3. TEMPLATES & CLEAR DRAWING SHEET:

- Secure the template and clear drawing sheet to the work surface with masking tape.
- Slowly squeeze the tube over the template and clear drawing sheet.
- Always make sure gel lines and different colors are touching.
- To make your designs sturdy, overlap lines and make designs thick.
- Reinforce thin spots by adding extra gel.
- Rotate the template and clear drawing sheet as you design.
- Wipe off the tip to remove excess gel before starting a new design technique or project to keep designs neat and precise.
- Make patches! Design directly on the clear drawing sheet, let your design dry, then peel off! Outline the back of the design with gel and attach it to fabric or a gel clutch!

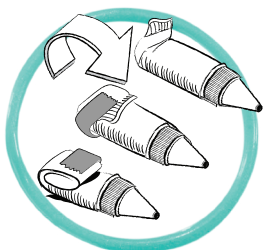
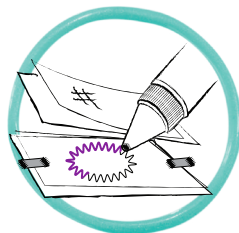


1 TIP

Uncap the tube. Remove and keep the protective plug. Then, twist on a tip.

2 DRAW

Press the tube tip against the design surface and squeeze. Rotate the surface as you design.



3 ROLL

Roll the tube down from the top as you squeeze to push the compound toward the tip. Tape down or clip the rolled portion if necessary.

4 PLUG & CAP

When you finish using a color, remove the tip. Then, squeeze the gel as close to the tube opening as possible and firmly push the plug into the tube. Twist on the cap.



5 DRY & PEEL

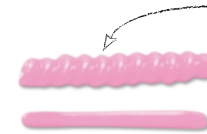
Silk Screen: Remove the template and dry completely. Then, remove the screen and your design is ready!

Trays and Template: Let your designs dry completely. Then, carefully peel your creations off of the template or tray.

DESIGN STYLES

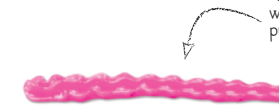
Apply these design styles to any of your creations. Twist on a design tip, press it against the design surface, and squeeze. The longer you squeeze, the bigger the shape will be.

ROUND TIP



To create a beaded effect, continually pull and push the tube at an angle.

STAR TIP



To create a beaded effect with the star tip, continually pull and push the tube at an angle.

RAKE TIP



To create a wavy ribbon effect, use the rake tip to continually pull and push the tube at an angle.

SPIKE EFFECT

To create a spike effect, squeeze out the gel until it reaches the size you want. Then stop squeezing and pull the tube away. Repeat this step with all of the spikes touching.



RAINBOW EFFECT

To create a color gradient effect, put the same tip you were using on a different color tube without cleaning it and continue drawing.



CAUTIONS

WARNING: Not suitable for children under 6 years. Use under adult supervision.

- Functional Sharp Point: Contains earrings.
- Keep away from eyes. Use in a well-ventilated area. Do not eat or drink while handling this product.
- Avoid contact with skin before the compound is completely dry. Wash hands after use.
- Only apply gel to surfaces that you want to permanently design.
- Product may not be completely removed from all surfaces.
- To remove compound, wait for it to dry completely and peel off.
- Color transfer may occur.
- Keep long hair and loose clothing away from the gel.
- This gel is not edible.
- Illustrations are for reference only. Styles may vary from actual contents.
- Hand wash all materials (not included) inside out with cold water. Air dry only. DO NOT machine dry.

PLEASE KEEP THIS MANUAL AS IT CONTAINS IMPORTANT INFORMATION

The preferred method of contact for Customer Service is through our e-mail contact form at www.mgae.com

547198
Conforms to
ASTM D-4236.

AGES
8+



16300 Roscoe Blvd.
Van Nuys, CA 91406 U.S.A.
(800) 222-4685
Printed in China
U.S. Patent Pending

MGA Entertainment UK Ltd.
50 Presley Way, Crownhill
Milton Keynes, MK8 0ES
Bucks, UK
+ 0800 521 558

www.gelapeel.com

© 2017 MGA Entertainment, Inc. GEL-A-PEEL™ is a trademark of MGA in the U.S. and other countries.

All logos, names, characters, likenesses, images, slogans, and packaging appearance are the property of MGA. 0417-1-E/INT

