



# AMAZING SURPRISE™

SKU: 559764

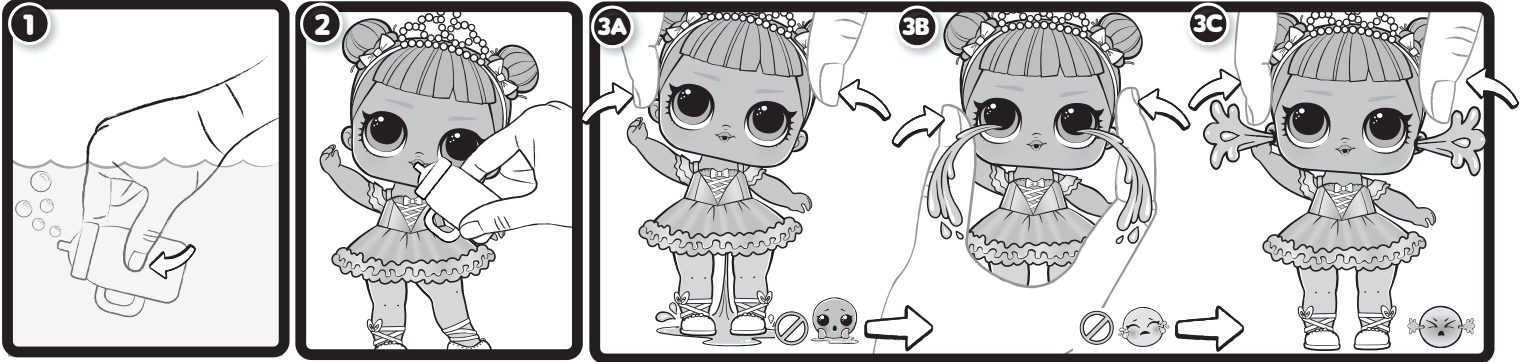
AGES 3+

ADULT SUPERVISION REQUIRED

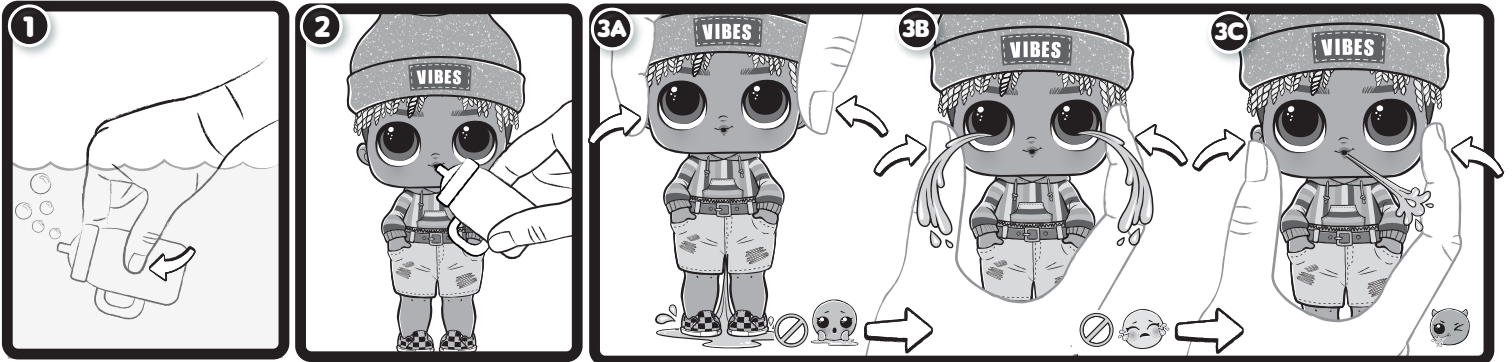
**WARNING:**  
CHOKING HAZARD—Small parts.  
Not for children under 3 years.

Illustrations are for reference only. Styles may vary from actual contents.

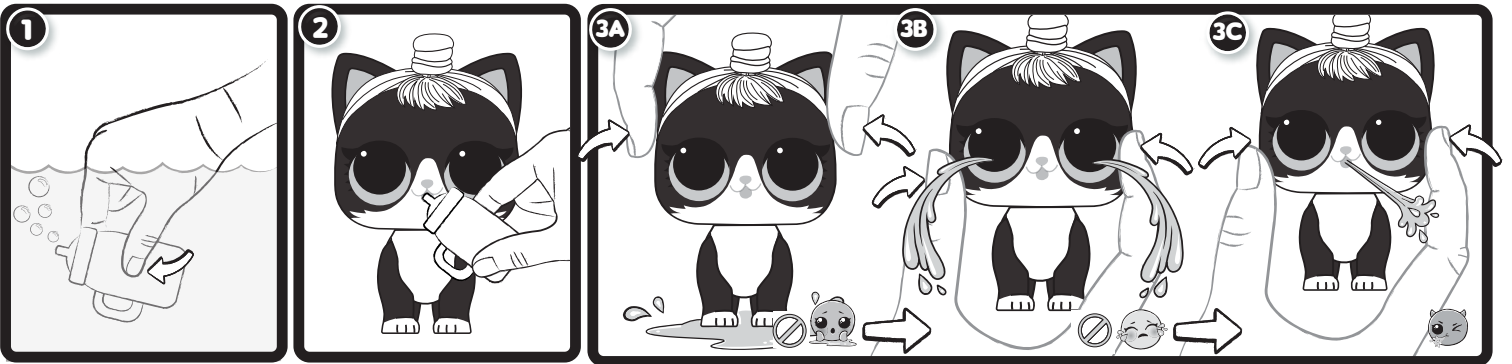
## DOLL FEATURES



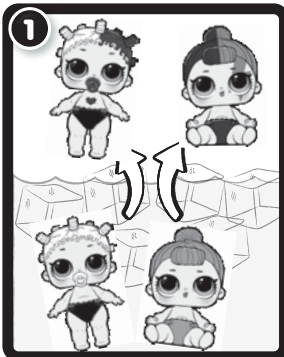
## BOY FEATURES



## PET FEATURES



## LIL SISTERS™ FEATURES



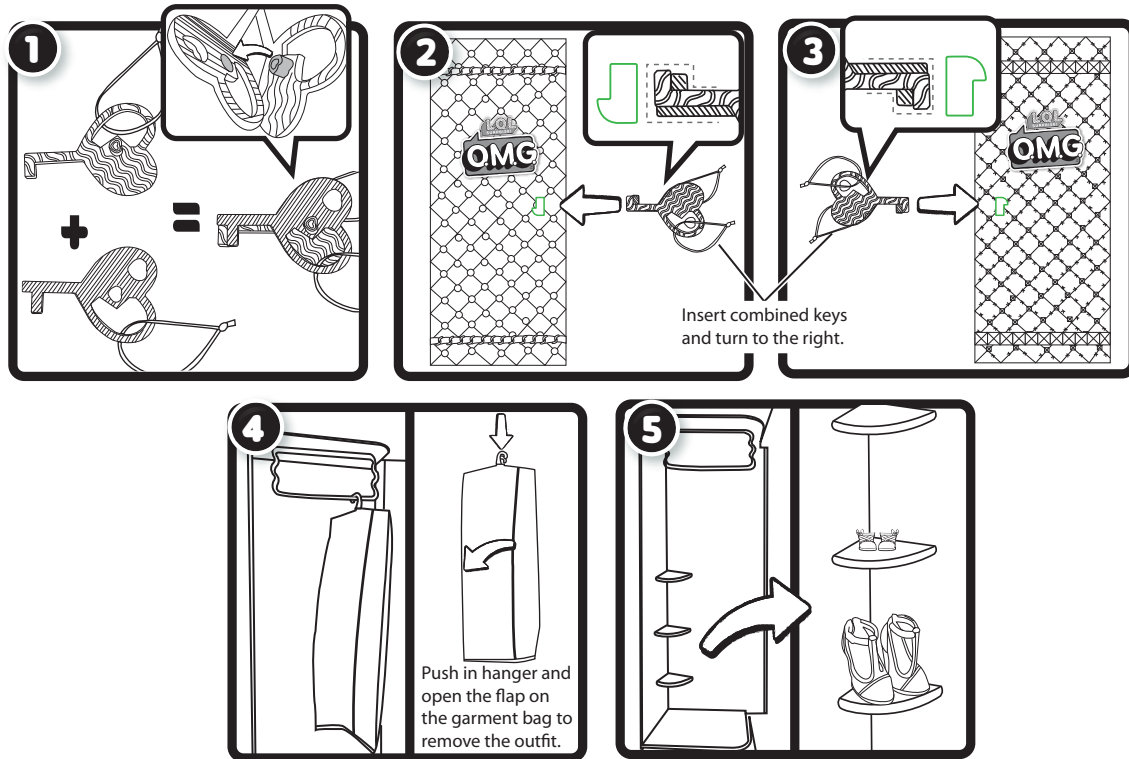
### COLOR-CHANGE

- Color change will start at approximately 59°F (15°C), but best results occur if the ice water is chilled to approximately 32°F (0°C) or colder.
- Only Lil Sisters™ change color and will not retain water from the bottle.
- Color change will only work on certain parts of the doll's body or accessories. Not all included accessories change color.
- If color change does not work properly or quickly, the temperature of the doll's body may be too close to the temperature of the water.
- Color change temperatures may vary according to weather conditions.
- The color-change effect of the doll's body has a lengthy, but limited lifespan.

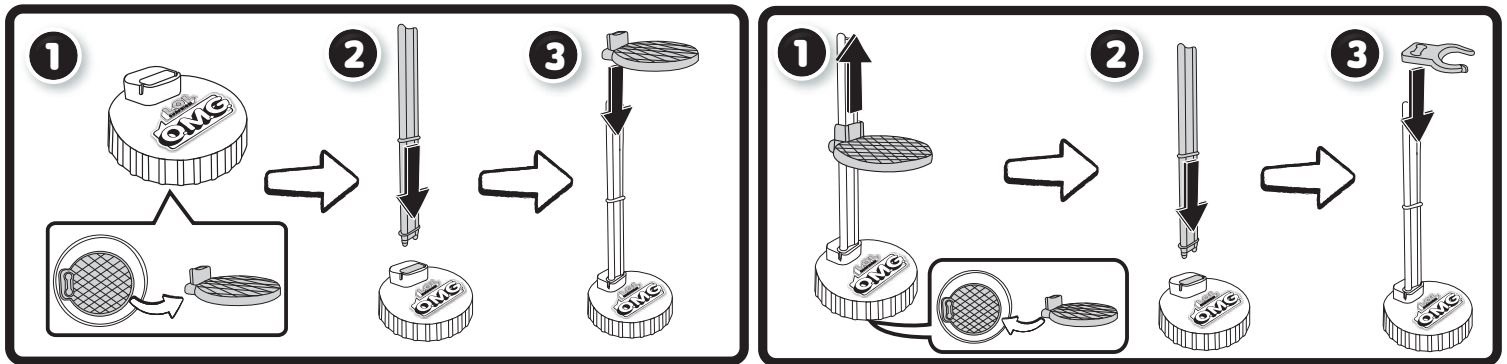
### IMPORTANT INFORMATION

- Before beginning, cover the play area to protect from possible water damage.
- Your dolls will either cry, pee or spray water through the ears.
- Boy dolls and pets will either cry, spit or pee.
- For best results, fill the bottle and feed the dolls or pets two times.
- Do not place the dolls or pets in extremely hot water.
- Do not feed the dolls or pets extremely hot water.
- An adult must be present when children are playing with water.
- Do not store the dolls or pets in direct sunlight for extended periods of time.
- Exposure to sunlight may deactivate color change feature.
- Squeeze out all water from the bottle and the doll after each use.
- Thoroughly drain the dolls and pets on a dry towel in a well-ventilated area after use and before storing.
- Air dry only. Do not place in the dryer or subject to excessive heat.
- Boy characters are anatomically correct.

## CLOSET



## FASHION DOLL CHAIR AND STAND



- Doll stand can be both a stand and a chair.
- The seat for the chair is stored under the base.
- For added support when the doll is sitting, add the c-clip.

## IMPORTANT INFORMATION

- Follow the steps on the guide (included) to open all the boxes.
- The plastic risers under boxes 1 and 5 can be removed so the boxes can lay evenly when storing.
- Keys are also charms. Ask an adult to undo the knot and place around the wrist.
- If keys are missing, push in the locking mechanism on the side of the closet to open.

Please keep this manual as it contains important information.



0619-0-E/INT  
Printed In China

www.LOLsurprise.com  
©2019 MGA Entertainment, Inc.  
L.O.L. SURPRISE!™ and L.O.L. SURPRISE! O.M.G.™ are trademarks of MGA in the U.S. and other countries. All logos, names, characters, likenesses, images, slogans, and packaging appearance are the property of MGA.

**MGA Entertainment, Inc.**  
9220 Winnetka Ave., Chatsworth, CA 91311  
U.S.A.  
(800) 222-4685

**MGA Entertainment UK Ltd.**  
50 Presley Way, Crownhill, Milton Keynes,  
MK8 0ES, Bucks, UK  
+ 0800 521 558

**MGA Entertainment (Netherlands) B.V.**  
Klipperaak 201, 2411 ND Bodegraven, NL  
Tel.: +31 (0) 172-758 038  
E-mail: klantenservice@mga.com

**Imported by MGA Entertainment Australia Pty Ltd**  
Suite 2.02, 32 Delhi Road  
Macquarie Park NSW 2113  
1300 059 676

The preferred method of contact for Customer Service is through our e-mail contact form at [www.mgae.com](http://www.mgae.com)