

IMPORTANT INFORMATION

- Not for children under 6 years. Keep out of reach of very young children.
- Contents are not food. Do not eat.
- Use for display only. Display case may not fully close with some characters inside.
- Once the cover on the bottom of the squishy slime container is peeled off, it cannot be replaced.
- Keep slime away from paper surfaces, as it will stick permanently.
- Color transfer from pigments may occur. Wash hands thoroughly after use. Keep slime away from clothing and surfaces other than the storage containers.
- Keep contents away from eyes, mouth and face.
- Avoid contact with the eyes. Keep away from broken skin. Use under adult supervision.
- Do not dispose of slime in the drain. Dispose in a trash receptacle once you are finished playing with it.
- Clean components with water. Rinse thoroughly and air dry in a well-ventilated area.
- Slime will dry out over time. Store in a resealable bag (not included) to prevent drying out when not in use.



POOPSIE™ FART JACOBS DISPLAY CASE

Age 6+

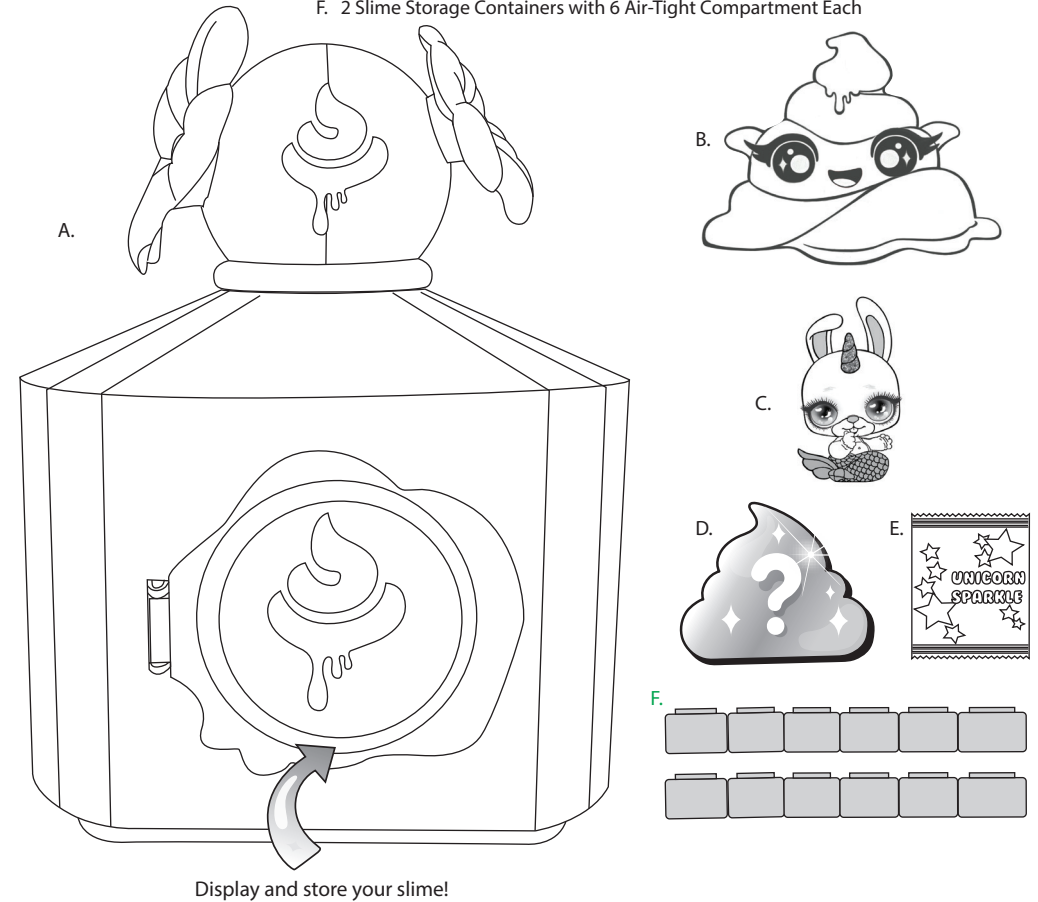
WARNING:
CHOKING HAZARD—Small parts.
Not for children under 3 years.

SKU: 559894

ADULT SUPERVISION REQUIRED

CONTENTS

- A. 1 Display Case
- B. 1 Squishy Slime Container
- C. 1 Exclusive Cutie Tootie™ (inside Squishy Slime Container)
- D. 1 Slime (inside Squishy Slime Container)
- E. 1 Packet of Unicorn Sparkle (Die-Cut Glitter)
- F. 2 Slime Storage Containers with 6 Air-Tight Compartment Each



Display and store your slime!

Please keep this manual as it contains important information.



0519-0-E

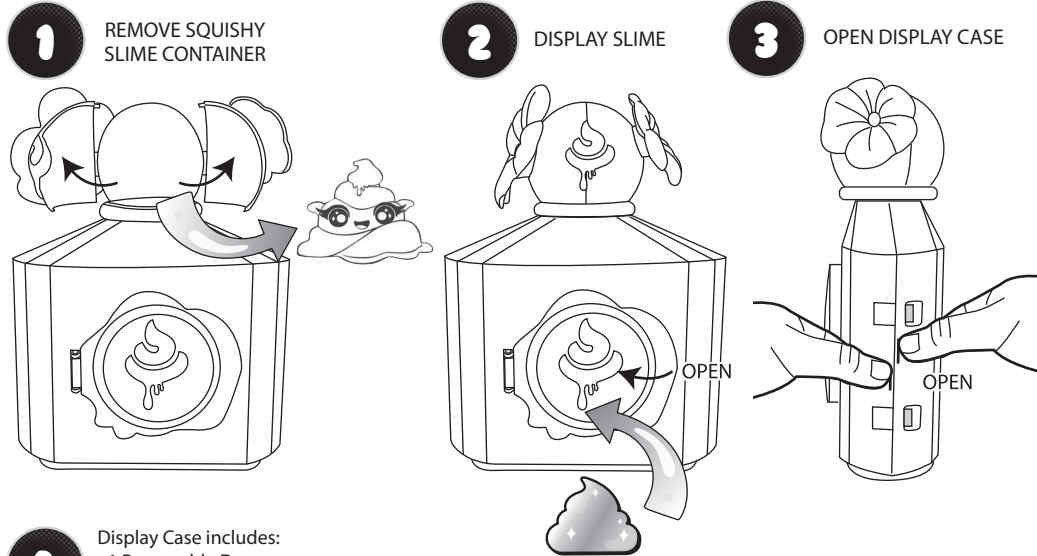
WWW.POOPSIESLIMESURPRISE.COM
©2019 MGA Entertainment, Inc.
POOPSIE™ is a trademark of MGA in the U.S. and other countries. All logos, names, characters, likenesses, images, slogans, and packaging appearance are the property of MGA.

16300 Roscoe Blvd.
Van Nuys, CA 91406
U.S.A.
(800) 222-4685
Printed in China

The preferred method of contact for Customer Service is through our e-mail contact form at www.mgae.com

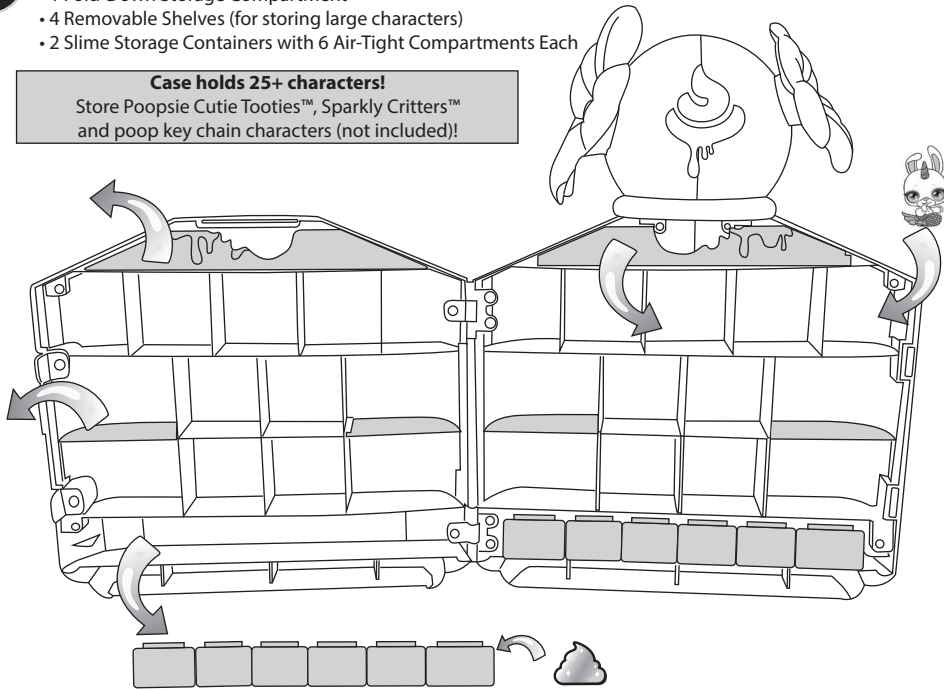
Illustrations are for reference only. Styles may vary from actual contents.

DISPLAYING & STORING



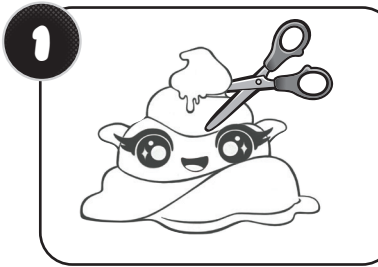
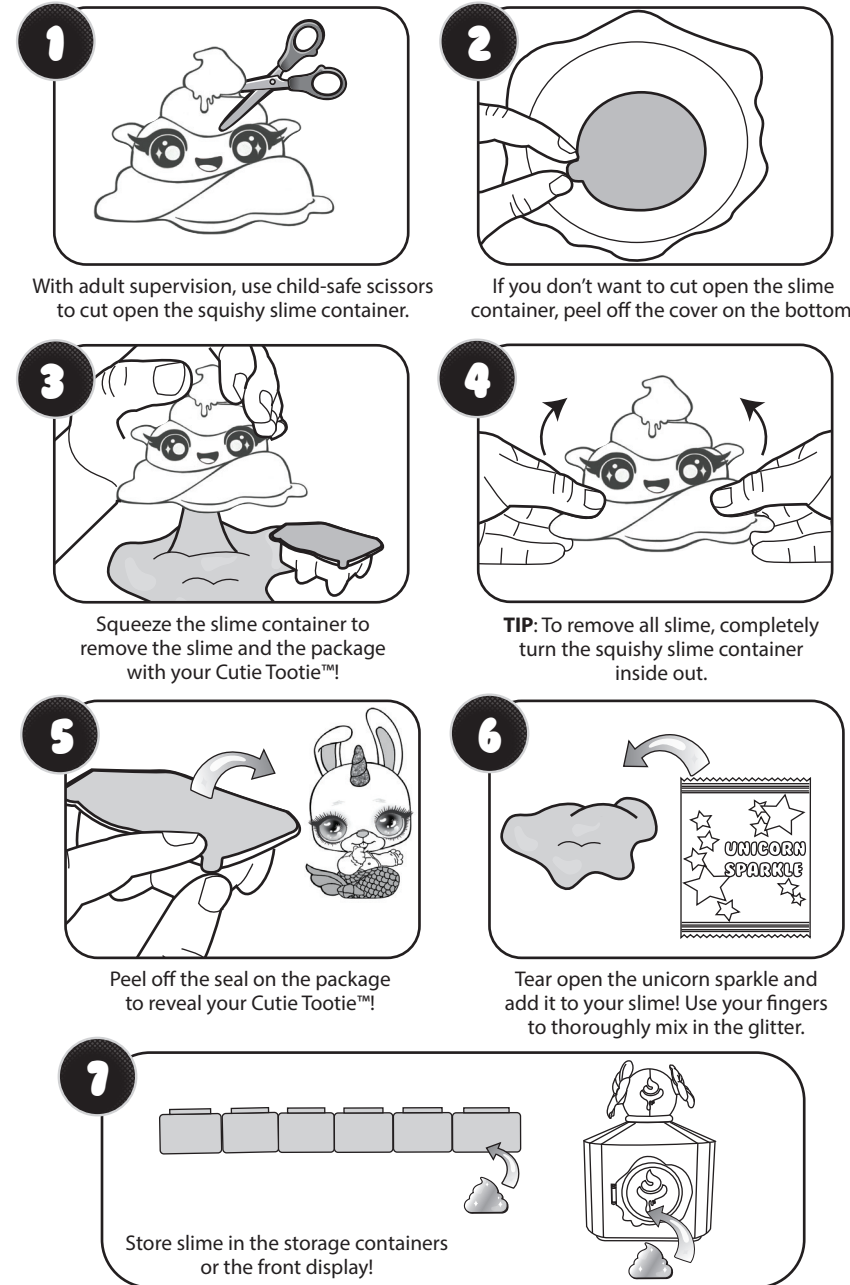
- 4** Display Case includes:
- 1 Removable Drawer
 - 1 Fold-Down Storage Compartment
 - 4 Removable Shelves (for storing large characters)
 - 2 Slime Storage Containers with 6 Air-Tight Compartments Each

Case holds 25+ characters!
Store Poopsie Cutie Tooties™, Sparkly Critters™ and poop key chain characters (not included)!

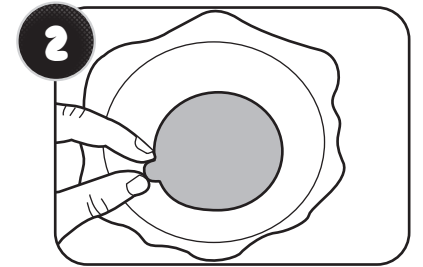


REVEAL YOUR CUTIE TOOTIE™

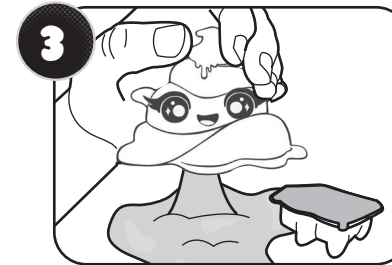
Before beginning, cover the play area to prevent possible damage.



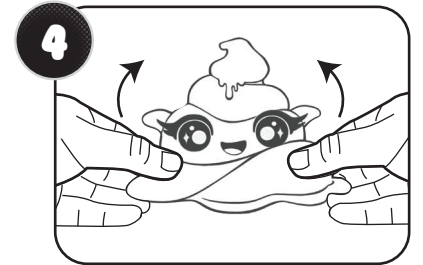
With adult supervision, use child-safe scissors to cut open the squishy slime container.



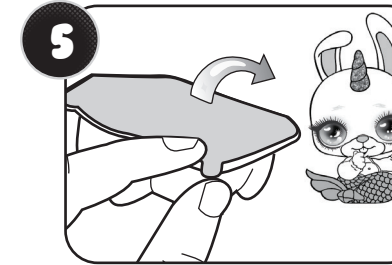
If you don't want to cut open the slime container, peel off the cover on the bottom.



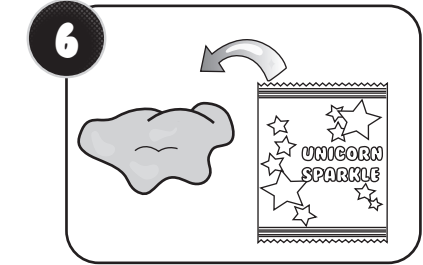
Squeeze the slime container to remove the slime and the package with your Cutie Tootie™!



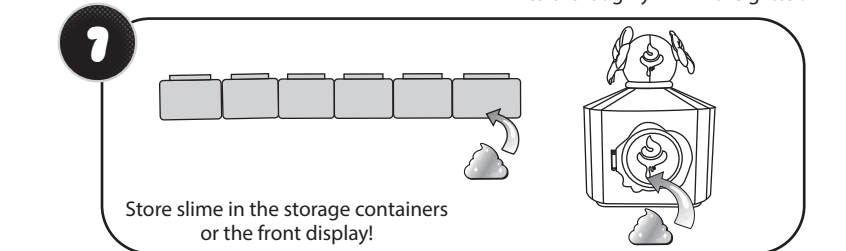
TIP: To remove all slime, completely turn the squishy slime container inside out.



Peel off the seal on the package to reveal your Cutie Tootie™!



Tear open the unicorn sparkle and add it to your slime! Use your fingers to thoroughly mix in the glitter.



Store slime in the storage containers or the front display!