



UNICORN CRUSH™

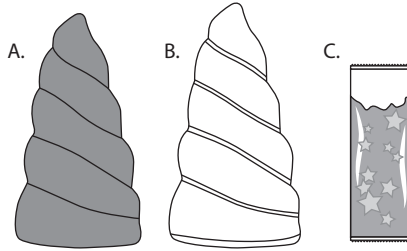
Age 6+

WARNING:
CHOKING HAZARD—Small parts.
Not for children under 3 years.

SKUs: 560937, 560937X1, 560944,
560944X1, 562955, 562962
ADULT SUPERVISION REQUIRED

CONTENTS

- A. Sand Horn with Glitter Filling
- B. Horn Storage Container
- C. Ready-to-Use Slime Packet



ITEMS YOU WILL NEED

(Not Included)

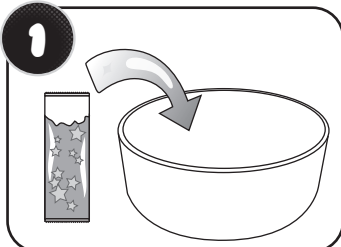
- 1 Large Bowl
- 1 Large Bowl Filled with Water
(TIP: Don't fill all the way to the top!)



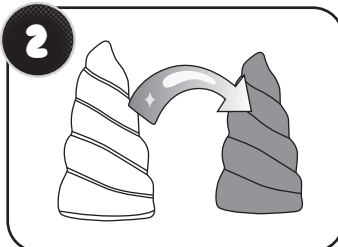
Illustrations are for reference only. Styles may vary from actual contents.

QUICK START

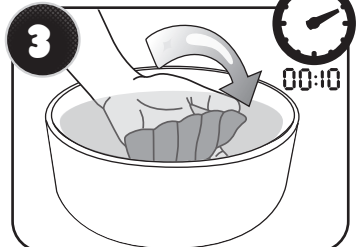
**Before beginning, cover the play area to prevent possible damage.
Remove any protective wrapping from the sand horn.
Glitter will release from the horn, so play on a protected surface.**



1 In a large, empty bowl, open the slime packet and pour the slime into the bowl.



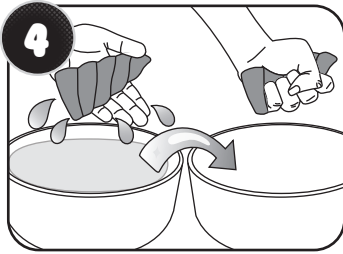
2 Open the horn container and remove the sand horn.



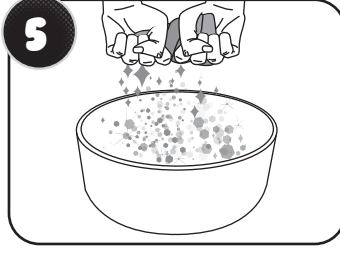
3 In a large bowl filled with water, loosely hold the sand horn under water for 10 seconds.

DO NOT CRUSH!

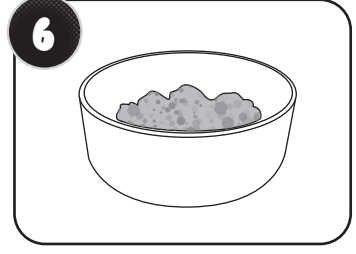
QUICK START CONTINUED



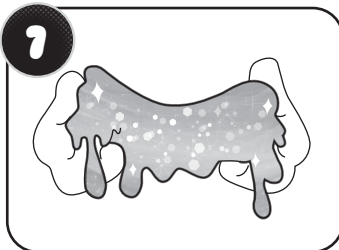
4 Remove the sand horn from the water and hold it over the bowl with slime.



5 Hold the horn away from you over the bowl and crush it with your hands to release the glitter from inside the horn.

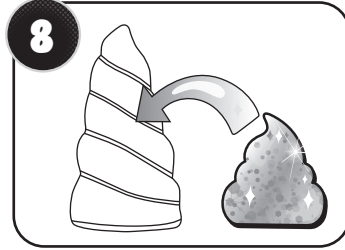


6 Completely crush the sand horn with your hands in the bowl with slime.



7 Mix the crumbled sand, glitter and slime together until thoroughly combined to create a new slime!

TIP: Add sprinkles of water a little at a time to make the slime stretchier until you reach the desired consistency.



8 Store the slime inside the horn container when you're finished playing.

IMPORTANT INFORMATION

- Not for children under 6 years. Keep out of reach of very young children.
- Adult supervision is required when children are playing with water.
- Contents are not food. Do not eat or drink.
- If the sand horn starts to soften and crush in the water, remove it quickly and crush it over the bowl with slime.
- Slime will dry out over time. Store slime in the horn container or in a sealed bag to prevent drying out.
- Keep slime away from paper surfaces, as it will stick permanently.
- Color transfer from pigments may occur. Wash hands thoroughly after use and keep slime away from clothing and surfaces other than the container.
- Keep contents away from eyes, mouth and face.
- Do not aim horn at eyes or face. Do not blow glitter into others' eyes or faces.
- Avoid contact with the eyes. Keep away from damaged skin. Use under adult supervision.
- Do not dispose of slime or other contents in the drain. Dispose in a trash receptacle once you are finished playing with it.
- Before emptying the water from the bowl, remove all sand and glitter to avoid blocking the drain.

Please keep this manual as it contains important information.



0319-1-E

WWW.POOPSIESLIMESURPRISE.COM
©2019 MGA Entertainment, Inc.
POOPSIE™ and POOPSIE SLIME SURPRISE!™ are trademarks of MGA in the U.S. and other countries. All logos, names, characters, likenesses, images, slogans, and packaging appearance are the property of MGA.

16300 Roscoe Blvd.
Van Nuys, CA 91406 U.S.A.
(800) 222-4685
Printed in China

The preferred method of contact for Customer Service is through our e-mail contact form at www.mgae.com