

RAINBOW HIGH™

HAIR STUDIO

WARNING:
CHOKING HAZARD—Small parts.
Not for children under 3 years.

Age 6+
SKU: 569329
ADULT SUPERVISION REQUIRED

CONTENTS

A. 1 Doll
B. 1 Outfit
C. 1 Pair of Shoes
D. 1 Pair of Earrings

E. 1 Doll Stand
F. 1 Chalk Applicator
G. 1 Hair Brush

H. 4 Color Hair Creams
I. 1 Glitter Hair Gel
J. 5 Bobby Pins



Please keep this manual as it contains important information.



0620-1-E
Printed in China

WWW.RAINBOWHIGH.COM
©2020 MGA Entertainment, Inc.
RAINBOW HIGH™ is a trademark of MGA in the U.S.
and other countries. All logos, names, characters,
likenesses, images, slogans, and packaging
appearance are the property of MGA.
9220 Winnetka Ave.
Chatsworth, CA 91311 U.S.A.
(800) 222-4685

The preferred method of contact for
Customer Service is through our e-mail
contact form at www.mgae.com

Illustrations are for reference only. Styles may vary from actual contents.

SALON MAKEOVER

Before beginning:

1. Rinse the doll's hair with water and thoroughly air dry to remove the shaping gel from your doll's hair.
2. Cover the play area and put a protective layer over your clothing to prevent possible damage.
3. Remove any protective seals over the cosmetics before use.

IMPORTANT NOTE:

Because all children's hair is not identical, color hair cream results may vary. Prior to fully using this product, it is advised that you test the cream by applying it to a small portion of hair in an inconspicuous area, allowing it to air dry, then washing the hair. Several washings may be required to ensure the desired result of complete color removal.

FOR YOUR HAIR OR DOLL'S HAIR!



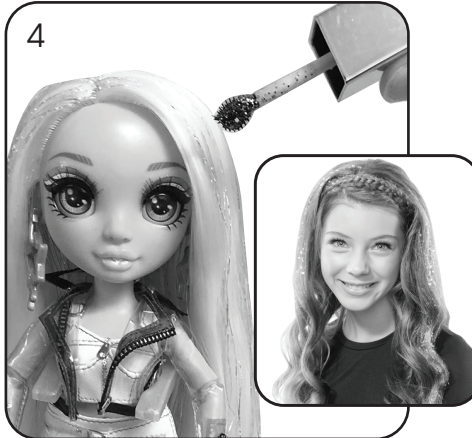
Select a 1/2 inch (12 mm) section of hair, and place it between the plates of the applicator with the chalk on the top side of the hair and the sponge on the underside.



Choose a different section of hair. Open the color hair cream and use the applicator wand to apply color to the strand, working from the root to the bottom.



Hold the applicator at the root of the hair, clamp it over the section of hair and firmly pull down to the bottom of the strand. Then, release the hair from the applicator. Repeat as necessary for desired results.



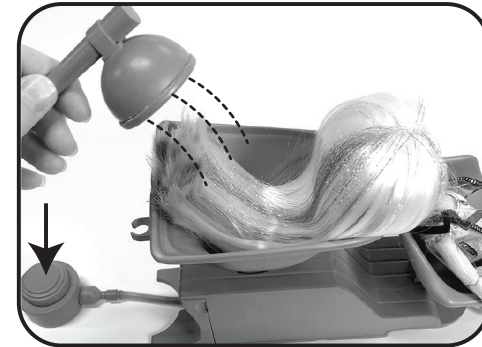
Open the glitter hair gel, and use the applicator brush to apply it to a new section of hair. Add glitter and color to your own hair, just like your doll's hair!

TIPS:

- For best results, do not layer the hair chalk and the color cream. Let color cream dry thoroughly before playing with the hair or using the hair brush. Glitter hair gel can be layered over color after color has dried.
- Always close the cap on the color hair cream and glitter hair gel after use to prevent them from drying out easily.

CLEANING

SALON SOLD SEPARATELY



Rinse cosmetics from hair with water. Always remove color from hair after playing. You can also use the Rainbow High™ Salon (sold separately) to rinse cosmetics from the doll's hair! Always remove cosmetics from hair after playing.

⚠ WARNING

- Do not use glitter hair gel or color hair cream on eyelashes or eyes. Cosmetics should be used on head hair ONLY or the hair of a Rainbow High™ Hair Play Surprise Doll.
- AVOID CONTACT WITH EYES, MOUTH AND FACE. In case of contact with the eyes, rinse immediately with plenty of water and seek medical advice if necessary. Cosmetics are for external use only.
- Do not ingest. If swallowed, wash out mouth with water and drink some fresh water. Do not induce vomiting. Seek immediate medical advice.
- These cosmetics are laboratory tested and safe for use as recommended. As with all cosmetics, some individual skin types may experience minor skin irritation. If this occurs, discontinue use and consult a physician if necessary.
- Not for children under 6 years. Keep out of reach of very young children.
- USE UNDER ADULT SUPERVISION. Adult supervision is required when children are playing with water.
- Use as directed in these instructions.

IMPORTANT INFORMATION

- The glitter hair gel and color hair cream included in this playset are to be used ONLY on the child's head hair or the hair of a Rainbow High™ Hair Play Surprise doll. Not recommended for use on any other type of doll.
- Color transfer from pigments may occur. Wash hands thoroughly before and after use.
- Glitter hair gel and color hair cream may damage or stain certain fabrics, carpeting, wood finishes or other porous and polished surfaces. Protect or cover any play surface before using.
- Keep glitter hair gel and color hair cream away from clothing and other surfaces, as pigment transfer may occur.
- Wear a protective layer over your clothing to prevent possible color transfer.
- Wash contents with water. Use a damp cloth to wipe clean. Then, air dry thoroughly in a well-ventilated area.
- Do not leave contents in the sun or in very hot areas.
- Remove cosmetics from your hair or your doll's hair with warm water. Always remove cosmetics from hair after playing.
- Glitter hair gel is for decoration only.